

# Texas

## Table Of Contents

- [1. Bases & Dockable Planets](#)
- [2. Unsettled Planets](#)
- [3. Jump Holes](#)
- [4. Jump Gates](#)
- [5. Wrecks](#)
- [6. Images](#)

- [System Info](#)
- [System Map](#)

Texas was originally a testing ground for the [Ageira Technologies](#) Company, for high-tech testing of jump gates. This has changed due to the so called "Dallas Incident" in 500 AS, which ended with the total destruction of the Dallas Research Station. Liberty refused to share any details about this accident, but the fact remains, that it resulted in huge geographical and demographical changes.

The destruction of the Station did not only expand radioactive debris to large parts of the System, but also opened a new series of unstable connections (jump-holes) to other Systems. Consequently, Liberty completely ceased all technological research here and changed the System into a "prison" colony. This introduced two heavily armed prison Stations to the System and included [Battleship Mississippi](#) serving as a mobile operational base for the [Liberty Navy](#).

It was rumoured in bars of local Stations, that the [Junkers](#) had successfully built a base somewhere inside the radioactive debris fields, and had started using the newly established jump-holes (inadvertently introduced after the Dallas Station demise) for regular smuggling operations.

### 1. Bases & Dockable Planets

- [Beaumont Base](#)
- [Battleship Mississippi](#)
- [LPI Huntsville](#) (*prison*)
- [LPI Sugarland](#) (*prison*)
- [Planet Houston](#) (*Mooring Fixture*)
  - Abilene (*moon*)

### 2. Unsettled Planets

- [Planet Chisos](#)
- [Planet Brazos](#)

3. Jump Holes

- [California](#)
- [Hudson](#)
- [New York](#)
- [Oasis](#)
- [Wanderers Pond](#)

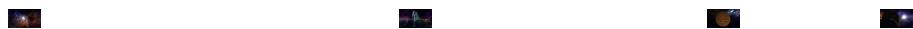
4. Jump Gates

- [Bering](#)
- [Hudson](#)
- [New York](#)

5. Wrecks

- [Dallas Storage Container](#)
- [Avenger](#)
- [Prudhoe](#)
- [Supply Ship Ft. Worth](#)

6. Images



Debris field and [Beaumont Base](#) Communications Satellite [Planet Chisos](#) Moon Abilene orbit

Texas System

Image not found or type unknown

---